

20 Mile Trail out and back

Quality: ****

Distance: 4 - 10 miles

Difficulty: Advanced intermediate

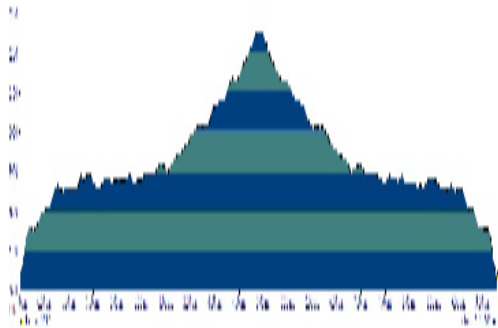
Riding time: 1 - 2 hours

Vertical gain: 500—650 feet

Tread: All singletrack

Season: Late June—early October

Watch out for: Hikers, backpackers and horseback riders



Getting there: Take Warren

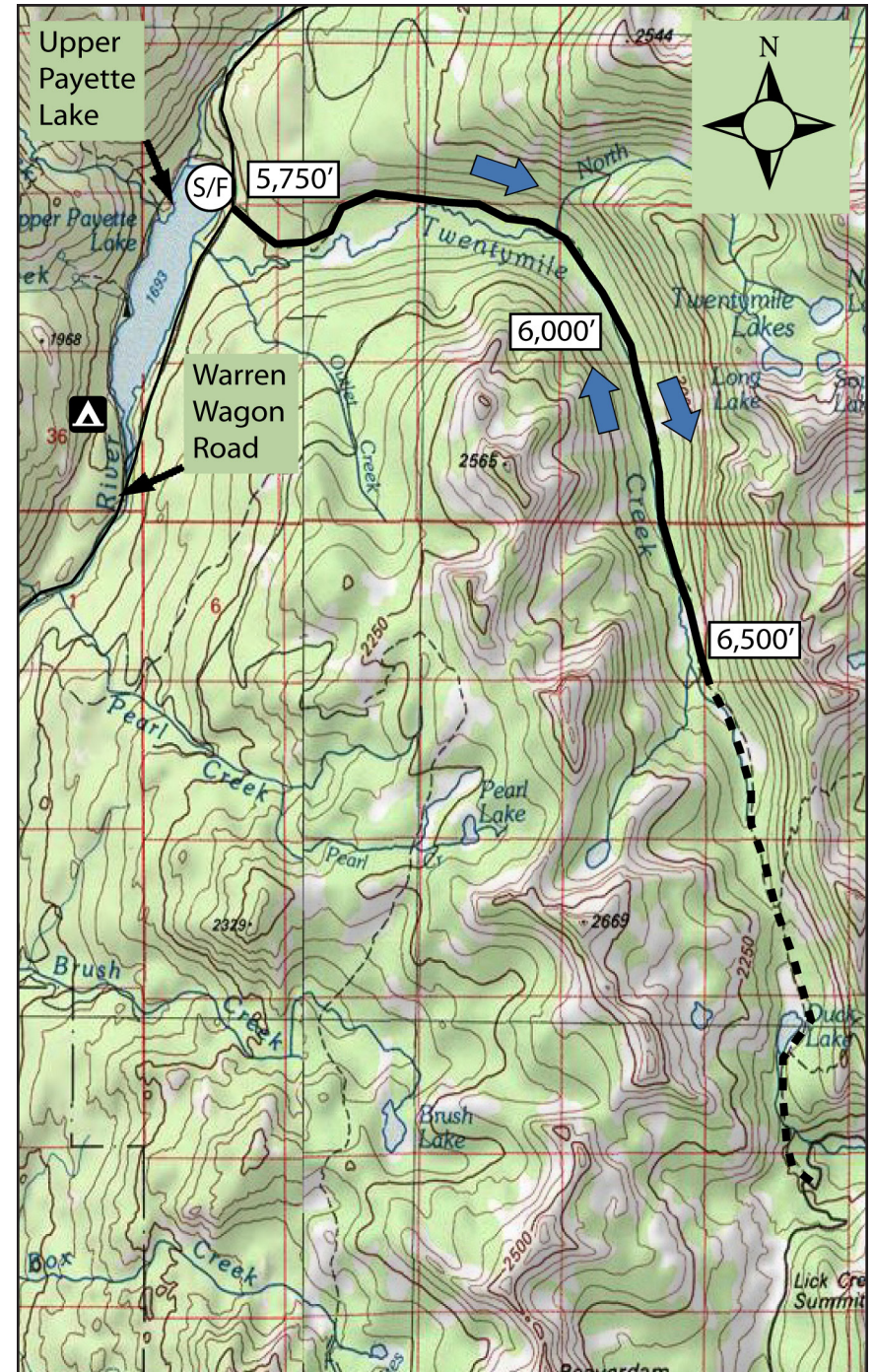
Wagon Road north of McCall about 10 miles to a trailhead on the right for 20 Mile Trail. The trailhead is across the road from Upper Payette Lake. You'll pass the entrance to the campground on Upper Payette Lake before you come to the trailhead. Park. The ride starts here.

The Ride: It's far easier to ride the 20 Mile Trail out and back vs. doing the expert ride from Duck Lake to 20 Mile, which involves a major shuttle to Lick Creek Summit. The 20 Mile Trail features lots of rocks, roots and other technical features, so you'll need to spin in an easy gear and do the best you can. The trail gets increasingly steep and challenging as you get farther up the creek, so just go as far as you wish, turn around and ride down. That's the fun part!



Wayne Ruemmele rides 20 Mile Trail on a nice summer day.

To begin, head up the trail. Get into a comfortable gear and climb. The trail climbs at a reasonable pace for the first several miles, but it's still challenging in places. You'll pass by a junction for the 20 Mile Lakes trail at mile 2.7. Continue riding uphill as far as your skill level and endurance allows. Most riders will turn around by Mile 5. Turn around and enjoy a fun downhill. -- SS



Map created with TOPoI ©2010 National Geographic